

The Department of Theatre & Musical Theatre Presents

# SWEENEY TODD

## The Demon Barber of Fleet Street

### A Musical Thriller



Music and Lyrics by  
**STEPHEN SONDHEIM**

Book by  
**HUGH WHEELER**

From an Adaptation by  
**CHRISTOPHER BOND**

Originally Directed On Broadway by **HAROLD PRINCE**

Orchestrations by Jonathan Tunick

Originally Produced on Broadway by Richard Barr,  
Charles Woodward, Robert Fryer, Mary Lea Johnson, Martin Richards  
in Association with Dean and Judy Manos

**April 27–29 | 7:30PM**

**and April 29 | 2:00PM**

**Erica Starr Theatre, UTC**

**ADULT CONTENT WARNING**

SWEENEY TODD is presented through special arrangement with Music Theatre International (MTI). All authorized performance materials are also supplied by MTI. [www.mtishows.com](http://www.mtishows.com)

**SAM HOUSTON STATE UNIVERSITY  
COLLEGE OF ARTS & MEDIA**

***SWEENEY TODD***  
***The Demon Barber of Fleet Street***  
**A Musical Thriller**

Music and Lyrics by  
**STEPHEN SONDHEIM**

Book by  
**HUGH WHEELER**

From an Adaptation by  
**CHRISTOPHER BOND**

**Originally Directed on Broadway by Harold Prince**

Orchestrations by Jonathan Tunick

Originally Produced on Broadway by Richard Barr,  
Charles Woodward, Robert Fryer, Mary Lea Johnson, Martin Richards  
in Association with Dean and Judy Manos

Director  
**PENNY HASEKOESTER**

Musical Director  
**KEITH LALONDE**

Choreographer  
**KYLE CRAIG-BOGARD**

Scenic Designer  
**NICHOLAS GRAVES**

Lighting Design  
**ERIC MARSH**

Costume Design  
**GEORGE CURRY**

Technical Director  
**CRAIG BROSSMAN**

Stage Manager  
**GRACE MAYNARD**

**ACKNOWLEDGEMENTS**

Dr. Ronald Shields, Susi Hasekoester, Jonathan Craft

Performance has one 15-minute intermission

SWEENEY TODD is presented through special arrangement with Music Theatre International (MTI).  
All authorized performance materials are also supplied by MTI. [www.mtishows.com](http://www.mtishows.com)

## THE CAST

Sweeney Todd  
Mrs. Lovett  
Judge Turpin  
Tobias  
Anthony  
Beadle  
Beggar Woman  
Johanna  
Pirelli  
Fogg  
The Bird Seller  
Understudy Anthony  
Ensemble

DAVID QUIROZ  
PAIGE KLASE  
GABRIEL MULLEN  
TRISTAN FLORES  
SAROA-DWAYNE SASA  
JORDAN OKEKE  
LEAH BERNAL  
LENA TATE  
COLTON DANIEL  
ERIC LARSON  
ISAAC GONZALEZ  
ETHAN ACHEE  
ETHAN ACHEE  
BRANDON COLLINS  
COLTON DANIEL  
LEXI DELAHOUSAYE  
NICOLE GEE  
ISSAC GONZALEZ  
MACY HERRERA  
RAYEVIN JOHNSON  
ERIC LARSON  
ANYSSA MCDONALD  
CARTER OSBORNE  
CAMERON REDWINE  
ELIZABETH RODRIGUEZ  
VEDA SALINAS  
MYKAL SANDERS  
KALEB WOMACK

### THE PLACE

Fleet Street and environs

### THE TIME

The 19th Century

## MUSICAL NUMBERS

### Act 1

The Ballad of Sweeney Todd  
No Place Like London  
The Worst Pies In London  
Poor Thing  
My Friends  
Green Finch and Linnet Bird  
Ah, Miss  
Johanna (Part I)  
Johanna (Part II)  
Pirelli's Miracle Elixir  
Pirelli's Entrance  
The Contest (Part I)  
The Contest (Part II)  
Ballad of Sweeney Todd  
Johanna  
Wait  
Pirelli's Death  
The Ballad of Sweeney Todd  
Kiss Me (Part I)  
Ladies In Their Sensitivities  
Kiss Me (Part II)  
Pretty Women (Part I)  
Pretty Women (Part II)  
Epiphany  
A Little Priest

### Act 2

God, That's Good  
Johanna-Act II Sequence  
After Johanna-Act II Sequence  
I Am A Lass  
By The Sea (Part I)  
By The Sea (Part II)  
Wigmaker Sequence  
The Letter  
After Letter  
Not While I'm Around  
After "Not While I'm Around"  
Parlor Songs (Part I)  
Parlor Songs (Part II)  
Parlor Songs (Part III)  
Fogg's Asylum  
Fogg's Passacaglia  
City On Fire  
Searching (Part I)  
Searching (Part II)  
Judge's Return  
Final Scene (Part I)  
Final Scene (Part II)  
The Ballad of Sweeney Todd

## ORCHESTRA

Violin 1 - Doreen Hanrahan  
Violin 2 - Esther Park  
Viola - Sam Lee  
Cello - Marissa Merritt  
Double Bass - Nathan Mays  
French Horn - Chris Shelburne  
Trumpet 1 - Jon Kratzer  
Trumpet 2 - George Solis  
Trombone - Webb Gardner

Reed 1 - Ray Gonzalez (Pic, Flute)  
Reed 2 - Elvis Barksdale II (Oboe,  
English Horn)  
Reed 3 - Todd Hearn (Pic, Flute,  
Eb Clar, Bb, Clar)  
Reed 5 - Jacob Fernandez (Bassoon)  
Keyboard - Chip Colvin  
Percussion - Luke Hubley

## DIRECTORS' NOTE

"Attend the tale of Sweeney Todd  
His skin was pale and his eye was odd.  
He shaved the faces of gentlemen  
Who never thereafter were heard from again."

**"The Ballad of Sweeney Todd"**

And so, begins one of Steven Sondheim's most intriguing and complex musicals. *Sweeney Todd The Demon Barber of Fleet Street, A Musical Thriller* is how it's billed. And it is indeed all of those and much more.

For the record, I don't like horror films. I don't like melodrama. I abhor violence. And yet, here I am, directing this adaptation of a violent penny dreadful.

Sondheim and Wheeler's creation is absolutely masterful.

The music soars. The intricacy is incredible. The characters and situations surprising. And then of course, there is the heart of the melodrama, the violence, the love, the lust, the blood-oh, so much blood! All on full display. There's never a doubt from the very beginning that things are going to go horribly, irrevocably awry...But then there is the music. Which somehow always gives us hope.

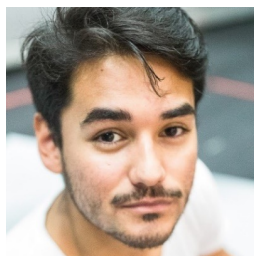
Stephen Sondheim's storytelling through music is unparalleled. His love of a good story is intimately intertwined in the lyrics and the music. His humor makes the macabre normal and his collaboration with Hugh Wheeler creates a piece of musical theatre that explored new realms when originally written and continues to do so today.

I could continue to gush about the joys of working on this piece of theatrical wizardry, but I will end with this:

"Attend the tale of Sweeney Todd.  
He served a dark and vengeful God.  
What happened then-Well, that's the play,  
And he wouldn't want us to give it away.  
Not Sweeney..."

Attend, my friends-attend...

**Penny Hasekoester**



### DAVID QUIROZ

Sweeney Todd

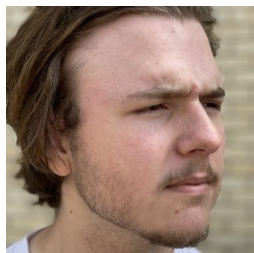
David is a senior musical theatre major from Houston, Texas. SHSU audiences may remember him as Jesus in *Hands on a Hardbody*, an ensemble member/cop in *Footloose* and as an ensemble member/President Ford in *Assassins*. Upon graduation, David plans to pursue a career in performance and musical theatre.



### PAIGE KLAZE

Mrs. Lovett

Paige is a senior musical theatre major from Sugar Land, Texas. SHSU audiences may remember her as Whatsername in *American Idiot*, Geronte in *A Doctor in Spite of Himself*, Margery in *Creature*, Old Shady in *Men on Boats* and Daughter of York/Messenger/Citizen in *Richard III*. At other institutions, she has appeared as Donna in *Mamma Mia!* and Gertrude McFuzz in *Seussical The Musical*. Upon graduation, Paige plans to pursue a career in acting.



### GABRIEL MULLEN

Judge Turpin

Gabriel is a senior theatre major from Bellingham, Washington. He attended TJC as a computer science major before changing to Theatre. He studied for a year at TJC working as a foreman in the shop while still participating in shows as an actor and as a techie. SHSU audiences may remember him as Facebender in *Airness*, Mr. Simmons in *Memphis* and as Hopkins in *Jump*. At other institutions he has appeared as Henry in *The Fantasticks* and as Garcin in *No Exit*. After graduation Gabriel plans to attend graduate school to obtain a masters degree and pursue a career as an actor/director/playwright.



### TRISTAN FLORES

Tobias

Tristan is a freshman musical theatre major from Harlingen, Texas. SHSU audiences may remember him as D Vicious in *Airness*. At other institutions, he has appeared as Wolfgang Amadeus Mozart in *Amadeus*, Usnavi in *In the Heights*, Gregor in *Kafka's Metamorphosis*, Warner in *Legally Blonde*, and Gabriel in *The Sweet Science of Bruising*. Upon graduation, Tristan plans to pursue a career in acting.



### **SAROA-DWAYNE SASA**

Anthony

Saroad-Dwayne is a senior musical theatre major from Pflugerville, Texas. SHSU audiences may remember him as Johnny in *American Idiot*, Leandre in *A Doctor in Spite of Himself*, Asmodeus in *Creature*, Greg in *Hands on a Hardbody* and as a member of the ensemble in *Sonnets for an Old Century*. Upon graduation, Saroad-Dwayne plans to pursue a career in acting.



### **JORDAN OKEKE**

Beadle

Jordan is a sophomore musical theatre major from Houston, Texas. SHSU audiences may remember him as Lieutenant Stokes in *American Son* and as Chris Alvaro in *Hands on a Hardbody*. At other institutions, he has appeared as Leo in *You are Cordially Invited to Sit In*, Radames in *Aida*, and Billy Flynn in *Chicago*. Upon graduation, Jordan plans to pursue a career in musical theatre.



### **LEAH BERNAL**

Beggar Woman

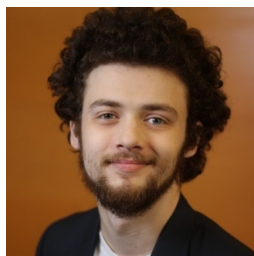
Leah is a junior musical theatre major. Her SHSU credits include chorus/understudy Aide in *Antigone*, as well as an ensemble member in *Sonnets for an Old Century*. At other institutions, she has appeared as Tracy Turnblad in *Hairspray*. Upon graduation Leah plans to pursue a career in acting.



### **LENA TATE**

Johanna

Lena is a junior musical theatre major from Lufkin, Texas. This is her debut to the SHSU stage! At other institutions she has appeared as Ado Annie in *Oklahoma!*, Sally Brown in *You're a Good Man Charlie Brown*, and as the Dragon in *Shrek*. Upon graduation, Lena plans to pursue a career in acting.



### **COLTON DANIEL**

Pirelli/Ensemble

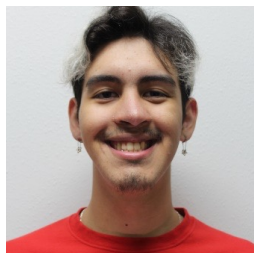
Colton is a senior musical theatre major from Cedar Park, Texas. His SHSU credits include Huey in *Memphis*, the Assistant Music Director for *Hands on a Hardbody*, and a member of the ensemble in *Violet* and *Heathers*. At other institutions he has appeared as Sir Galahad in *Spamalot* and Judge Littlefield in *The Last Days of Judas Iscariot*. Upon graduation, Colton plans to pursue a career in musical theatre.



### **ERIC LARSON**

Fogg/Ensemble

Eric is a junior musical theatre major from Austin, Texas. SHSU audiences may remember him as Frank in *Hands on a Hardbody*, a storyteller in *Once on this Island* and as a member of the ensemble in *Let Me Down Easy*. At other institutions, he has appeared as Edward Bloom in *Big Fish*, Sam Carmichael in *Mamma Mia* and as Usnavi in *In the Heights*. Upon graduation, Eric plans to pursue a career in acting, and design.



### **ISAAC GONZALEZ**

The Bird Seller/Ensemble

Isaac is a freshman musical theatre major from Houston, Texas. His previous SHSU credits include swing in *American Idiot* and ensemble member in *Love Notes Cabaret*. At other institutions, he has appeared as Eddie in *Mamma Mia*, Ryan in *High School Musical*, and Father Mandin in *The Copper Children*. Upon graduation, Isaac plans to pursue a career in acting.



### **ETHAN ACHEE**

Understudy Anthony/Ensemble

Ethan is a freshman musical theatre major from Porter, Texas. SHSU audiences may remember him as Officer Larkin in *American Son*. At other institutions, he has appeared as Danny Zuko in *Grease*, the Scarecrow in *The Wizard of Oz*, and James in *James and the Giant Peach*. Upon graduation, Ethan plans to pursue a career in acting.





### BRANDON COLLINS

Ensemble

Brandon is a senior musical theater major from Tyler, Texas. SHSU audiences may remember him as Sly in *Detroit 67*, the Dad in *Jump*, a member of the ensemble in *Once On This Island* and *Sonnets for an Old Century*. At other institutions, he has appeared as the understudy for Sly and Elijah in the original musical *You're Cordially Invited to Sit In*, Mouthpiece in *West Side Story*, JoJo in *Newsies*, and Rodney/ensemble in *Thoroughly Modern Millie*. Upon graduation, Brandon plans to pursue a career in musical theater and screen acting.



### LEXI DELAHOUSSAYE

Ensemble

Lexis is a freshman musical theatre major from Montgomery, Texas. Her SHSU credits include swing in *American Idiot*. At other institutions she has appeared as Bette in *Bette and Boo*, Becca in *Rabbit Hole*, and as a member of the ensemble in *The Hunchback of Notre Dame*. Upon graduation, Lexis plans to pursue a career in musical theatre.



### NICOLE GEE

Ensemble

Nicole is a freshman theatre major from Richmond, Texas. This is her debut to the SHSU stage! At other institutions she has appeared as Dorothy in *The Wiz*, Oda Mae Brown in *Ghost The Musical*, Sister Sophia in *The Sound of Music*, an ensemble member in *Big Fish*, Choragos in *Antigone*, Rose in *Alice in Wonderland*, Laundress in *Metamorphoses*, and Dirty Carlos in *Mariner*. Upon graduation Nicole plans to move to New York or California and pursue a career in the entertainment industry.



### MACY HERRERA

Ensemble

Macy is a senior musical theatre major from Wylie, Texas. SHSU audiences may remember her as Heather in *American Idiot*, a Storyteller in *Once on This Island*, and Kierstan Van Horne in *Sonnets for an Old Century*. At other institutions she has appeared as Hairelle in *Panto: Little Mermaid*, and as 'Swing' Ingrid & McQ in *MacGyver*. She will soon return to Stages Theatre as Snow White in *Panto: Snow White and the Seven Dorks*. Upon graduation, Macy plans to pursue a career in musical theatre performance.



### **RAYEVIN JOHNSON**

Ensemble

Rayevin is a junior musical theatre major from Sugarland, Texas. SHSU audiences may remember her as Bunny in *Detroit 67*; Fay in *Jump*, Papa Ge in *Once On This Island* and as a member of the ensemble in *Sonnets for an Old Century*. At other institutions, she has appeared as Juliet in *Romeo & Juliet*, Sebastian in *The Little Mermaid*, and was the assistant stage manager for *Heathers*. Upon graduation, Rayevin plans to pursue a career in musical theatre.



### **ANYSSA MCDONALD**

Ensemble

Anyssa is a freshman musical theatre major from Arlington, Texas. Her SHSU credits include being a swing for *American Idiot*. At other institutions, she has appeared as Charolette in *Cinderella*, and as St. Robert Anne in *Nunsense*. Upon graduation, Anyssa plans to pursue a career in performance and musical direction.



### **CARTER OSBORNE**

Ensemble

Carter is a freshman musical theatre major from Georgetown Texas. His SHSU credits include being a Swing for *American Idiot*. At other institutions he has appeared as Tommy Boy in *Newsies*, Mike in *A Chorus Line*, and Count Leopold in *Anastasia*. Upon graduation, Carter plans to pursue a career in musical theatre.



### **CAMERON REDWINE**

Ensemble

Cameron is a sophomore musical theatre major from Santa Fe, Texas. SHSU audiences may remember him as a member of the ensemble in *American Idiot*. At other institutions he has appeared as Jesus in *Godspell*, Hot Blades Harry in *Urinetown* and Mr. Krabs in *Spongebob Squarepants The Musical*. Upon graduation, Cameron plans to pursue a career in acting.



### **ELIZABETH RODRIGUEZ**

Ensemble

Elizabeth is a sophomore musical theatre major from Houston, Texas. This is her debut to the SHSU stage! To date her additional theatre credits include, stage manager for *Joseph and the Amazing Technicolor Dreamcoat*, Mrs. Phelps in *Matilda*, and Snoopy in *You're A Good Man Charlie Brown*. Upon graduation, Elizabeth plans to pursue a career in performance and direction.



### **VEDA SALINAS**

Ensemble

Veda is a sophomore musical theatre major from Katy, Texas. Her SHSU credits include chorus member in *Antigone* and the assistant stage manager for *Memphis*. At other institutions she has appeared as the Bride in *Blood Wedding*. Upon graduation, Veda plans to pursue a career in acting.



### **MYKAL SANDERS**

Ensemble

Mykal is a sophomore musical theatre major from Richmond, Texas. This is his debut to the SHSU stage! At other institutions he has appeared as Tramarion Jackson in *Black Superhero Magic Mama*, Doody in *Grease*, Papa Ge *Once on this Island*, Omari in *Pipeline*, Jason in *Rabbit Hole*, and George in *Carrie: The Musical*. Upon graduation, Mykal plans to pursue a career in musical theatre.



### **KALEB WOMACK**

Ensemble

Kaleb is a sophomore musical theatre major from Houston, Texas. SHSU audiences may remember him as a member of the ensemble in *American Idiot*. Upon graduation, Kaleb plans to pursue a career in acting.



### **GRACE MAYNARD**

Stage Manager

Grace is a senior theatre major from Houston, Texas. Her SHSU credits include stage manager for *Endgame*, run crew for *Sweat* and assistant stage manager for *All in the Timing* and *Richard III*. At other institutions, she has appeared as Little Red Riding Hood in *Into the Woods*, Trix in *The Drowsy Chaperone* and was the Stage Manager for *Awake and Sing!* Upon graduation, Grace will be moving to Buffalo, NY to work as a stage manager at the D'Youville Kavinoky Theatre.



### **ELLIE HAND**

Assistant Stage Manager

Ellie Hand is a freshman theatre major from Kingwood, Texas. Her SHSU credits include assistant stage manager for *Antigone* as well as light board operator for *Airness*. At other institutions, she has participated in show designs for *Anastasia*, *Legally Blonde*, *Kentucky*, and *Shakespeare In Love*. Upon graduation, Ellie plans to pursue a career in stage management and sound design.



### **ASHLEY JESSUP**

Assistant Stage Manager

Ashley is a junior theatre major from Pearland, Texas. Her SHSU credits include assistant stage manager for *Betrayal* and stage manager for *Love Notes Cabaret* earlier this semester. As well as light board operator for *Fade*. At other institutions she has stage managed *Red*, *Describe the Night* and *1984*. Ashley plans to pursue a career in stage management.



### **CHRISTOPHER KOVICH**

Assistant Stage Manager

Chris is a freshman theatre major from League City, Texas. This is his first show to participate in at SHSU! At other institutions has worked on shows such as, *The Addams Family*, *Hairspray* and *SpongeBob the Musical*. Upon graduation, Chris plans to pursue a career in directing, stage management as well as working for the Disney Cruise Line.



### **ANTHONY SLOTERDIJK**

Assistant Stage Manager

Anthony is a freshman theatre major from Tomball, Texas. His SHSU credits include run crew for *American Idiot*, and costume crew for both *Fade* and *This is Our Youth*. At other institutions he was the sound designer and sound board operator for *The 39 Steps*. Upon graduation Anthony plans to pursue a career in lighting and scenic design.



### **LILY BROEKHUIS**

Co-Scenic Design

Lily is a sophomore theatre design technology major, sociology minor from Richmond, Texas. Their SHSU credits include scenic designer for *American Son*, and *Betrayal*, costume crew for *Airness*, light board operator for *Hands on a Hardbody*, and build crew for *Men on Boats*. At other institutions they have been the stage manager for *You're a Good Man, Charlie Brown*, and the lighting designer for *Cover of Life*. Upon graduation Lily plans to pursue an MFA and work as an attraction designer.



### **ALYSSA BENNETT**

Properties

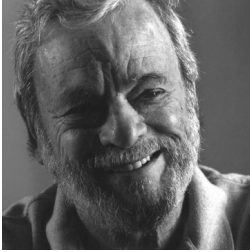
Alyssa is a senior theatre major from Deer Park, Texas. Her SHSU credits include lighting designer for *Fade* and *American Son*, assistant lighting designer for *American Idiot* and the sound board operator for *Detroit 67'*. At other institutions she has been the lighting designer for *Our Town* and the properties master for *Shrek: The Musical* and *She Kills Monsters*. Upon graduation, Alyssa plans to pursue a career in properties and lighting design.



### **KEITH LALONDE**

Musical Director

Keith LaLonde has been playing piano and music directing around Houston area theatres and schools for the last five years. He is currently enjoying his first year as a staff accompanist for the College of Arts and Music here at SHSU. Previous credits include music directing with Island ETC (*Mamma Mia*, *First Date*, *The Musical of Musicals*, *Spamalot*, *Rent*), *On the Verge Theatre* (*Runaways*), and *HITS Theatre*, as well as being the worship pianist at St. Peter UCC. *Sweeney Todd* is one of Keith's favorite shows, and he is looking forward to sharing it with all of you tonight.

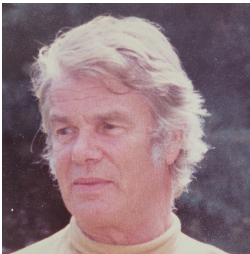


## STEPHEN SONDHEIM

Music and Lyrics

STEPHEN SONDHEIM wrote the music and lyrics for *Saturday Night* (1954), *A FUNNY THING HAPPENED ON THE WAY TO THE FORUM* (1962), *ANYONE CAN WHISTLE* (1964), *COMPANY* (1970), *FOLLIES* (1971), *A LITTLE NIGHT MUSIC* (1973), *THE FROGS* (1974), *PACIFIC OVERTURES* (1976), *SWEENEY TODD* (1979), *MERRILY WE ROLL ALONG* (1981), *SUNDAY IN THE PARK WITH GEORGE* (1984), *INTO THE WOODS* (1987),

*ASSASSINS* (1991), *PASSION* (1994) and *ROAD SHOW* (2008) as well as lyrics for *WEST SIDE STORY* (1957), *GYPSY* (1959) and *DO I HEAR A WALTZ?* (1965) and additional lyrics for *CANDIDE* (1973). Anthologies of his work include *SIDE BY SIDE BY SONDHEIM* (1976), *MARRY ME A LITTLE* (1981), *YOU'RE GONNA LOVE TOMORROW* (1983), *PUTTING IT TOGETHER* (1993/99) and *SONDHEIM ON SONDHEIM* (2010). He composed the scores of the films "Stavisky" (1974) and "Reds" (1981) and songs for "Dick Tracy" (1990) and the television production "Evening Primrose" (1966). His collected lyrics with attendant essays have been published in two volumes: "Finishing the Hat" (2010) and "Look, I Made A Hat" (2011). In 2010 Broadway's Henry Miller's Theatre was renamed The Stephen Sondheim Theatre in his honour; in 2019, London's Queens Theatre was also renamed the Sondheim.



## HUGH WHEELER

Book

Hugh Wheeler was a novelist, playwright and screen writer. He wrote more than thirty mystery novels under the pseudonyms Q. Patrick and Patrick Quentin, and four of his novels were transformed into films: *Black Widow*, *Man in the Net*, *The Green-Eyed Monster* and *The Man with Two Wives*. For films he wrote the screenplays for *Travels with My Aunt*, *Something for Everyone*, *A Little Night Music*, and *Nijinsky*. His plays include *Big Fish*, *Little Fish* (1961), *Look: We've Come Through* (1961) and *We Have*

*Always Lived in the Castle* (1966, adapted from the Shirley Jackson novel), he co-authored with Joseph Stein the book for a new production of the 1919 musical *Irene* (1973), wrote the books for *A Little Night Music* (1973), a new production of *Candide* (1973), *Sweeney Todd, the Demon Barber of Fleet Street* (1979, based on a version of the play by Christopher Bond), and *Meet Me in St. Louis* (adapted from the 1949 M-G-M musical), contributed additional material for the musical *Pacific Overtures* (1976), and wrote a new adaptation of the Kurt Weill opera *Silverlake*, which was directed by Harold Prince at the New York Opera. He received Tony and Drama Desk Awards for *A Little Night Music*, *Candide* and *Sweeney Todd*. Prior to his death in 1987 Mr. Wheeler was working on two new musicals, *Bodo* and *Fu Manchu*, and a new adaptation of *The Merry Widow*.

## TECHNICAL CREW

<b>Assistant Stage Managers</b>	Ellie Hand, Ashley Jessup, Christopher Kovich, Anthony Sloterkijk
<b>Dance Captain</b>	Brandon Collins
<b>Deck Supervisor</b>	Sharif Goodlette
<b>Assistant Lighting Designer</b>	Bryan Allred
<b>Properties Design</b>	Alyssa Bennet
<b>Light Board Operator</b>	Roni Mburu
<b>Rail</b>	Nathan Ray, Sarah Rivers
<b>Sound/Microphone Technician</b>	Andrea Loflin
<b>Spotlight Operators</b>	Madi Bailey, Nicole Campos
<b>Stagehands</b>	Kristopher Gaines, Shariff Goodlette, Lila Johnson, SJ Overfield, Aliyah Robinson
<b>Assistant to the Costume Designer</b>	Grace Wacker
<b>Costume Shop Assistants</b>	Kaylee Baldwin, RB Reynolds, Grace Wacker
<b>Cape Master</b>	RB Reynolds
<b>Fight Choreographer</b>	Kevin Crouch
<b>Intimacy Choreographer</b>	Penny Hasekoester
<b>Stage Management Advisor</b>	Patrick Pearson

## COSTUME BUILD CREW

Jaden Balmer, Dylan Broach, Abree Brown, Kaleb Cole, Emily Childs, Katherine Culak, Zarina Garza, Ellie Hand, Shelby Howell, Samuel Ivarson, Liesel McMahan, Willie Morris, Bailey Poston, Bryce Pullen, Kayli Ryan, Mason Scott, Sam Sheridan, Erick Silvia, Anthony Sloterdijk, Carley Strauser, Kai Taylor, Ave Vincent, Lydia Williams

## COSTUME RUN CREW

Kaylee Baldwin, Falon Blanchard, Ambree Brown, Emily Childs, Zarina Garza, Liesel McMahan, Bryce Pullen, Kayli Ryan, Erick Silvia, Carley Strauser, Ave Vincent, Lydia Williams

## MANAGEMENT CREW

Mackenzie Aguilar, Lauren Bender, Tyler Bruffett, Kasey Courtney, Yesenia Colondres, James Dean, Isaac Gonzalez, Jessica Gutierrez, Zara Hernandez, Robert Hope, Ellie King, Paige Klase, Garett Martin, Orlando Martinez, Rheagen Olsen, Caroline McReynolds, Bella Moulton, Bryce Pullen, Jennifer Rodriguez, Saroa Dwayne Sasa, Erick Silvia, Benjamin Treviño, Makenna Vincent, Paschal Williams

## POSTER DESIGN

Parker Marley

## PUBLICITY PHOTOS

Cara DeGaiish

## THEATRE AND MUSICAL THEATRE FACULTY AND STAFF

**Ronald E. Shields, Ph.D.**

*Professor of Theatre  
Dean, College of Arts & Media*

**Penelope Hasekoester, M.F.A.**

*Professor of Theatre  
Associate Dean, College of Arts & Media*

**Thomas Prior, M.F.A.**

*Department of Theatre & Musical Theatre Chair  
Professor of Theatre*

**Laura Avery, D.M.A., S.V.W.**

*Professor of Theatre*

**Aaron Brown, M.F.A.**

*Assistant Professor of Theatre*

**Kyle Craig-Bogard, M.F.A.**

*Assistant Professor of Theatre*

**Macaela Carder, Ph.D.**

*Visiting Assistant Professor of Theatre*

**Kevin Crouch, M.F.A.**

*Associate Professor of Theatre*

**George Curry, M.F.A.**

*Costume Shop Supervisor*

**Dain Geist, M.F.A.**

*Lecturer of Theatre*

**Nicholas Graves, M.F.A.**

*Department of Theatre & Musical Theatre  
Associate Chair, Associate Professor of Theatre*

**Donna Hinds Sawyers, M.M., S.V.W.**

*Lecturer of Theatre*

**Victoria Lantz, Ph.D.**

*Associate Professor of Theatre*

**Eric Marsh, M.F.A.**

*Professor of Theatre*

**Patrick Pearson, M.F.A.**

*Assistant Professor of Theatre*

**Karen Rees, D.M.A., S.V.W.**

*Lecturer of Theatre*

**Amanda Waites, M.M., S.V.W.**

*Lecturer of Theatre*

**Paula Green, B.A.**

*Theatre Administrative Secretary*

**James Shields, M.S., M.B.A**

*Box Office Manager, PAC & UTC*

**Katie Stefaniak Prior, M.Ed.**

*Theatre & House Manager, UTC*



## **THEATRE & MUSICAL THEATRE PATRONS**

You can help attract and attain talented students by becoming a patron. Tax-deductible contributions to the theatre, musical theatre, and/or dance scholarship and development funds may be made to the Department of Theatre and Musical Theatre. Designate which area you wish to support. Stars donate \$1000, Angels grant \$550-\$999, Benefactors provide \$250-\$549, Donors contribute \$150-\$249, and Contributors give up to \$149.

Visit us online to make donations or send contributions to: The Department of Theatre and Musical Theatre, Sam Houston State University, Box 2297 Huntsville, TX 77341-2297.

### **STARS**

Mr. & Mrs. James D. Bozeman, Elsie Czerwinski, Michael Czerwinski, Penny Hasekoester, The Humphreys Foundation, Tommy & Mary Ann Metcalf, Scott & Mary McCarley, Mr. & Mrs. Thomas J. Mitchell, Mr. Glenn Payne, Ronald E. Shields & Renee Thompson

### **ANGELS**

David Fleming, Ted Maier, Lee Miller, Jennifer Pontius, Tom & Katie Prior

### **BENEFACTORS**

Harold Hurry, Wesley Boyd, Michael & Marian Craig, Ken & Roberta Krock, Dr. Richard Eglsaer, Arthur & Alicia Harris, Frank & Maria Holmes, Ralph & Linda Pease, John C. & Julia B. Roberts, Larry D. Routh, Wes & Susan Sanders, Teri & Ahmed W. Samadazi

### **DONORS**

Wayne Bennett, Marjean Creager, Constance Culver, Henry & Donna Dedek, Jeff Cook, Bill & Geneva Cooney, James & Nancy Gaertner, Lynnette Hale, Thomas & Carla McAdams, Sandra Larson, Eric Marsh, Carla Simmons, Shirley Stewart, Bruce & Paula Green

### **CONTRIBUTORS**

Alpha One Publishing, Mark & Missy Adams, Darlene Andrews, Jose Avalos, Wayne & Sherri Barrett, Sandra Barry, Craig & Sara Brossman, Aaron Brown, Macaela Carder, Kevin & Erin Crouch, Dorothy & Kermit Cummings, Krystal Davis, Juanita Diaz, Charles & Elizabeth Friel, Donna Gilbert, Norman & Zerlene Gruennzer, James & Sandra Hanscom, Lloyd & Jody Hisaka, Ann & Bill Hodges, Joe & Lauren Hoke, Edward Janecka, Judy Koehl, Ron & Donna Koska, Nick & Vicky Lantz, Darlene & Jose Mendez, Matt & Sarah-Jane Menefee, Pamela & Donald McGinty, Charlene McWilliams, Mrs. B. Muecke, Robert & Zola Norton, Kathrynne Pelton, Phillip & Monica Pulis, Kelvin Randall, Maria Regalado, Tim & Sherry Reid, George & Diane Rienstra, Carrie Saunders, Victor & Judith Sower, Paul & Claire Stuckey, Leslie & Earl Sykes, Virginia Tanksley, Diana & Jessie Wilder, Robin & Tommy Wood



*The Kennedy Center American College Theater Festival, part of the Rubenstein Arts Access Program, is generously funded by **David M. Rubenstein.***

*Special thanks to The Harold and Mimi Steinberg Charitable Trust for supporting the John F. Kennedy Center for the Performing Arts' Kennedy Center American College Theater Festival.*

*Additional support is provided by The Honorable Stuart Bernstein and Wilma E. Bernstein; and the Dr. Gerald and Paula McNichols Foundation.*

*Kennedy Center education and related artistic programming is made possible through the generosity of the National Committee for the Performing Arts.*

This production is entered in the Kennedy Center American College Theater Festival (KCACTF). The aims of this national theater education program are to identify and promote quality in college-level theater production. To this end, each production entered is eligible for a response by a regional KCACTF representative, and selected students and faculty are invited to participate in KCACTF programs involving scholarships, internships, grants and awards for actors, directors, dramaturgs, playwrights, designers, stage managers and critics at both the regional and national levels.

Productions entered on the Participating level are eligible for invitation to the KCACTF regional festival and may also be considered for national awards recognizing outstanding achievement in production, design, direction and performance.

Last year more than 1,500 productions were entered in the KCACTF involving more than 200,000 students nationwide. By entering this production, our theater department is sharing in the KCACTF goals to recognize, reward, and celebrate the exemplary work produced in college and university theaters across the nation.

## NAMED SCHOLARSHIPS

William F. Brown Endowed Scholarship  
Margaret A. Conwell Memorial Musical Theatre Endowed Scholarship  
Kevin Dodson Memorial Theatre Endowed Scholarship  
Nancy Gaertner Performing Arts Endowed Scholarship  
Ruth Wynne Thomason Hollinshead Endowed Scholarship in Theatre & Dance  
Humphreys Foundation-Drama Scholarships  
Mary S. and G. Scott McCarley Performing Arts Endowed Scholarship  
Sofia Victoria Mendez Performing Arts Scholarship  
Jim & Julee Miller Theatre Scholarship  
Ethel Brown Nicholson Endowed Scholarship  
Ethel Brown Nicholson Scholarship in Honor of James Bozeman Jr.  
Katherine and Glenn Payne Theatre Scholarship  
Larry D. Routh Theatre Production Endowed Scholarship  
Daniel Sellers Memorial Endowed Scholarship in Musical Theatre  
Dr. Charles A. Schmidt Drama & Dance Endowed Scholarship  
SHSU Dance and Theatre Endowed Scholarship  
Erica Starr Memorial Theatre Endowed Scholarship  
Erica Starr "Live Your Dream" Memorial Theatre Endowed Scholarship  
Nancy and Mike Czerwinski "Dream With Me" Scholarship  
Bill & Ann Stokes Endowed Scholarship  
Department of Theatre and Musical Theatre Scholarships  
Thelma Jean Barnes Townley Scholarship  
Katy & E. Don Walker, Sr. Endowed Scholarship  
Jennifer Kathleen Weber Memorial Endowed Scholarship

FOLLOW US ON  
**SOCIAL MEDIA**



**SHSU THEATRE & MUSICAL THEATRE**



**@SHSUTHEATRE**



SCAN THE QR CODE TO VIEW OUR  
**2022–2023 SEASON**  
SHSUTICKETS.COM

**BOARD OF REGENTS  
THE TEXAS STATE UNIVERSITY SYSTEM**

Duke Austin, *Chairman* . . . . . Houston  
Garry Crain, *First Vice Chairman* . . . . . San Marcos  
Alan L. Tinsley, *Second Vice Chairman* . . . . . Madisonville  
Charlie Amato . . . . . San Antonio  
Sheila Faske . . . . . Rose City  
Dionicio (Don) Flores . . . . . El Paso  
Stephen Lee . . . . . Beaumont  
William F. Scott . . . . . Nederland  
Gabriel Webb, *Student Regent* . . . . . The Hills  
Brian McCall, *Chancellor* . . . . . Austin



Department of Theatre & Musical Theatre  
COLLEGE OF ARTS & MEDIA  
SAM HOUSTON STATE UNIVERSITY  
MEMBER THE TEXAS STATE UNIVERSITY SYSTEM