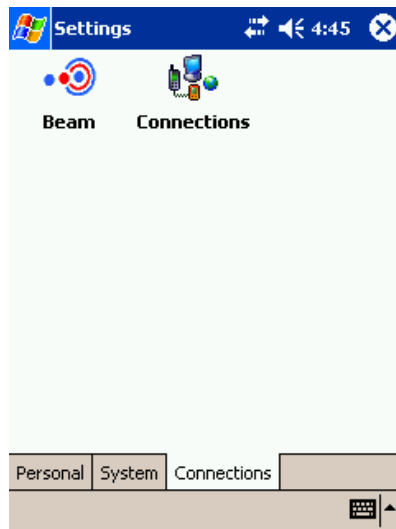


Steps for setting up Wireless on Pocket PC 2003

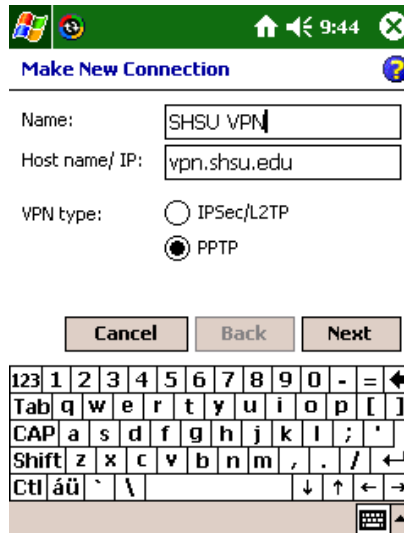
Go to “**Start**” then “**Settings**”. Select the “**Connections**” tab on the bottom and select “**Connections**”.



Add a VPN Server

Under My Work Network, select “**Add a VPN Server**”
Enter in for the following:

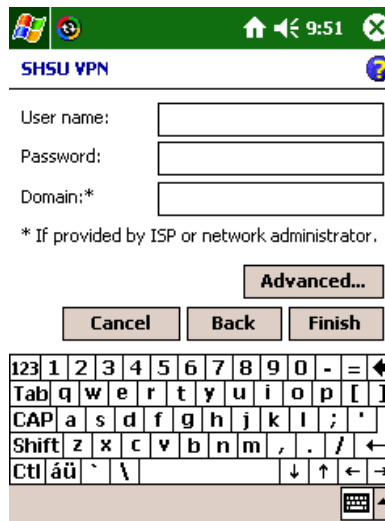
Name - SHSU VPN
 Hostname – vpn.shsu.edu
 VPN Type - PPTP



Select **"Next"**

Enter in the following information next:

User name - std*****
Password - *your account password*
Domain - shsu

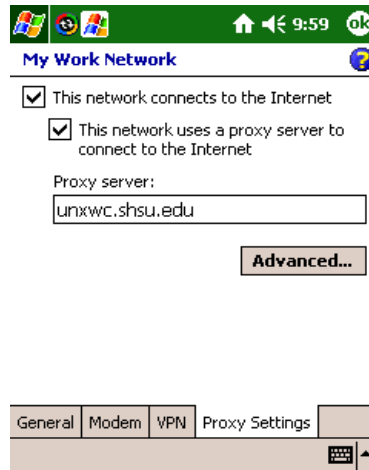


Select **"Finish"**

Add a Proxy Server

Now select the **"Proxy Settings"** tab after you have added the VPN connection.

Make sure **"This network connects to the Internet"** is checked, along with **"This network uses a proxy server to connect to the Internet"**. Enter in the Proxy server: **"unxwc.shsu.edu"**

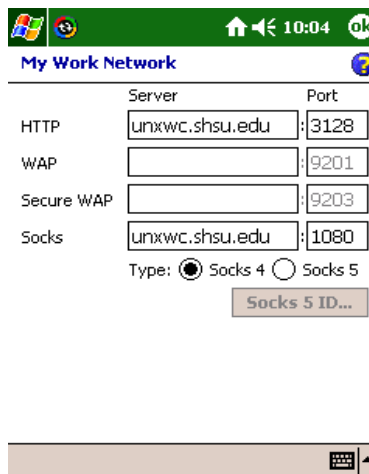


Select the **"Advanced"** button. Enter in the following information:

HTTP - unxwc.shsu.edu Port – 3128

Socks - unxwc.shsu.edu Port – 1080

Select "Socks 4" for the **"Type"**.



Select **"OK"** at the top right. Then select **"OK"** again.

Then select the **"Advanced"** tab at the bottom. Then select **"Select Networks"**.

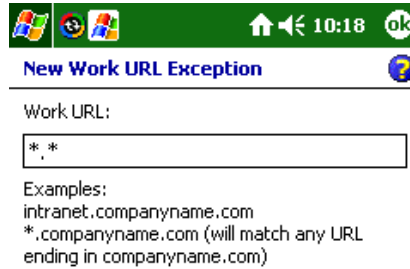
Set **"Programs that automatically connect to the Internet should connect using:"** to be **"My ISP"**.

Then set **"Programs that automatically connect to a private network should connect using:"** to be **"My Work Network"**

Then select the “**Exceptions...**” button.

Select the “**Add new URL...**” under “**URL exceptions:**”.

Type in *.* for the “**Work URL**”



Select “**OK**”. Then select “**OK**” again. You will be back at the “**Network Management**” screen again, select “**OK**”. Now you will be at the “**Connections**” screen, select “**OK**” once more.

Your connection is now set up. Open Internet Explorer and the wireless will connect to the VPN and you will be able to browse the web.