

Note: The following instructions are for Windows XP running under the default Windows XP theme. If your Windows XP is setup in *Classic View* please refer to the *Windows 2000 instruction guide*.

Installing Your Wireless Network Card

1. You must have a wireless network card installed in your laptop to access the wireless network.
2. Due to the many vendors of wireless network cards, it is outside the scope of this document to detail the specific instructions for each of the cards. In general, details of installation for your network card will be included and do not require a high level of technical expertise. Please follow all instructions provided by the manufacturer for the installation of the wireless network card.
3. Once you verified installation of the wireless card, you may proceed to the Configuration section of this guide for instructions on how to configure your wireless network card to access the SHSU wireless network.

Verifying Your Card's Hardware Installation

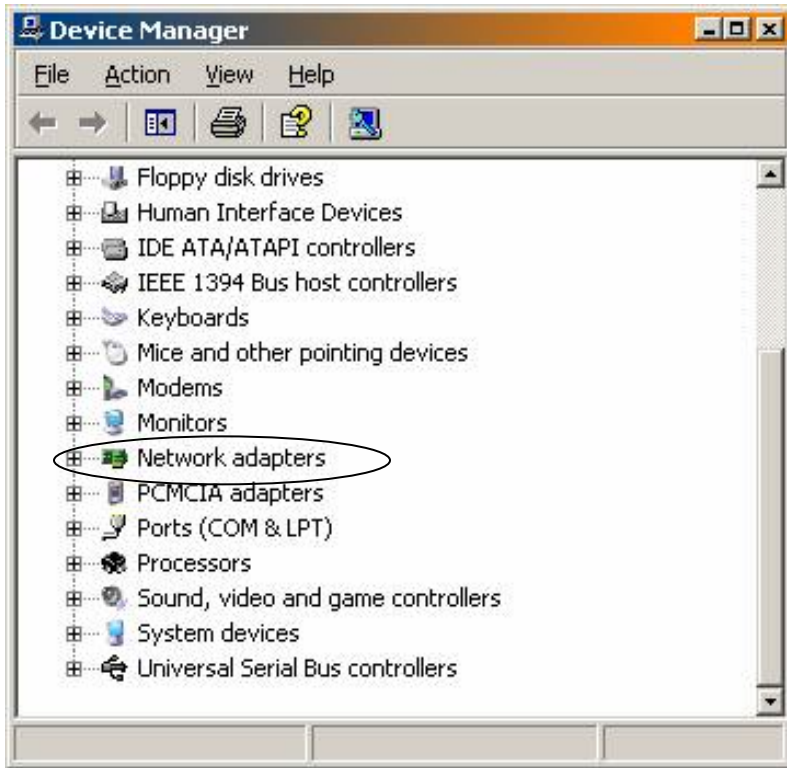
Note: If you do not have or do not know if you have a wireless network card installed in your laptop, please refer to the above section of this guide.

Before proceeding to the following sections, you must ensure that your wireless network card is operating properly.

To check, follow these steps:

1. Open the Start menu and right click on the "My Computer" icon.
2. Select Properties from the bottom of the menu.
3. From the System Properties dialog box, click on the Hardware tab at the top of the window.
4. From the Device Manager frame, click on the Device Manager button.
5. From the Device Manager dialog box, select the Network Adapters to expand its options.

You should see the name of your wireless network card vendor located in this list.



If this item is identified with a red X or a yellow “!”, there is a problem with your installation and you will need to reinstall your network card.

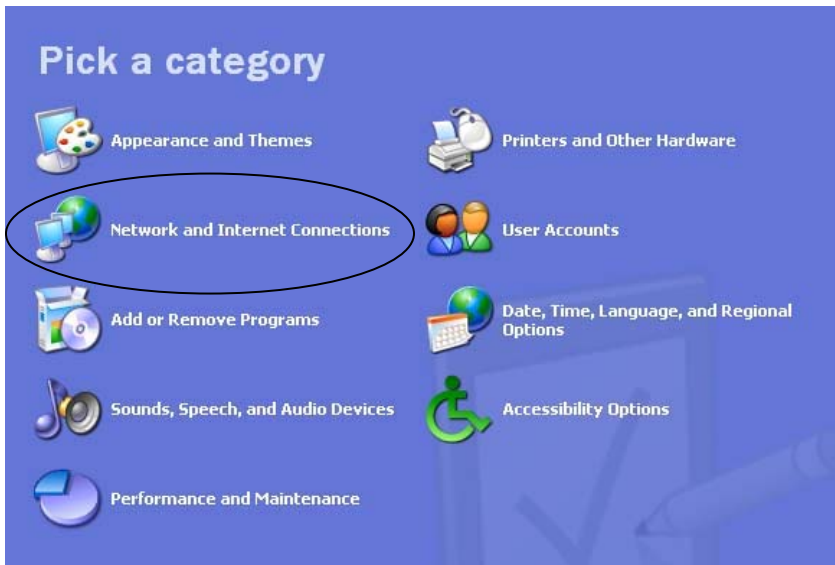
If you need further assistance, please contact the Computer Services Helpdesk at 294-1950.

Configuring Your SHSU Wireless Connection

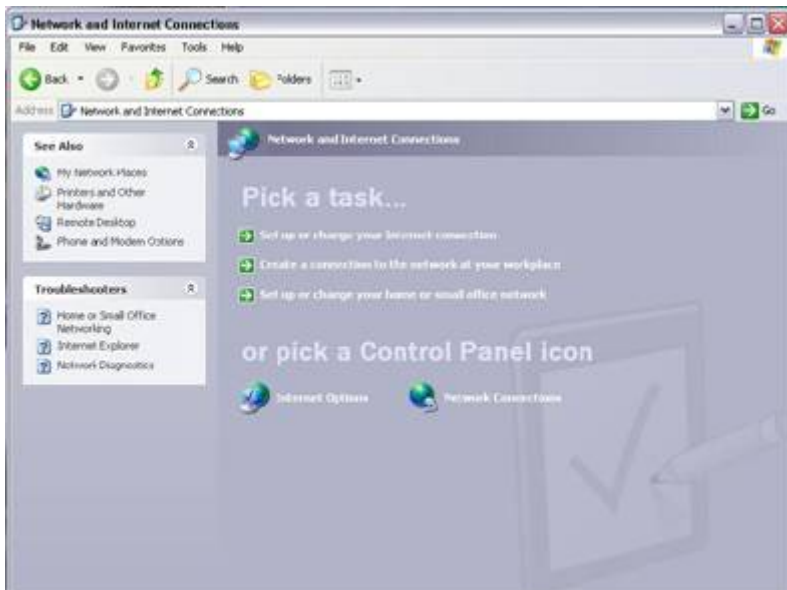
Open the Start menu and select Control Panel



From the Control Panel window, select Network and Internet Connections.



From the Network and Internet Connections window, click Network and Internet Connections.



From the Network Connections panel, click the Network Connections underneath the “pick a Control Panel icon” section. The Network Connections window will now appear. From this window, click on Create a New Connection. This is the first step in creating your new network connection.



When you click on Create a New Connection, the New Connections Wizard will appear on the screen. Click Next and then select the Connect to the Network at my Workplace option. Click next when you finish.



On the New Connection Wizard window, select Virtual Private Network connection and then click Next.



In the Company Name field, type SHSU and click Next.



From the New Connection Wizard window, select Do Not Dial the initial connection and then click Next.



In the Host Name or IP Address field, type “vpn.shsu.edu” and then click Next. At the last window, click Finish and your connection is done.

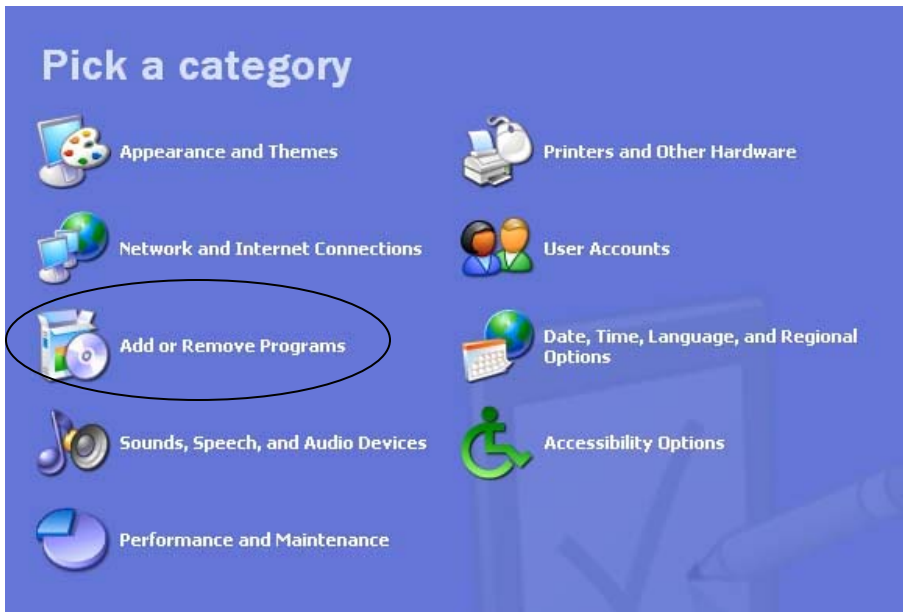


Connecting to the SamNet Wireless Network

To connect to the network, open the Start menu and select Control Panel.



From the Control Panel, select Network and Internet Connections.



From the Network and Internet Connections, click Network Connections.



When the Network Connections window appears, double click on the SHSU option under the Virtual Private Network section. A Connect SHSU dialog box will appear on screen prompting you for your username and password.



Type your SHSU username and password as you would usually do with your SHSU dial-up connection. Make sure that the “Save this username and password for the following users is NOT checked. Click Connect to logon to the wireless network.

Once connected, a network connection icon will be displayed on the taskbar next to your clock. You may click on the icon anytime to display more information on your connection.



A status window like the picture above will appear with information about your connection.

Disconnecting From the Sam Net Wireless Network

To disconnect from SamNet, double click on the blinking network connection icon in the lower right corner of the taskbar.

From the **SHSU Status** window, click on **Disconnect**. This will close the dialog box and disconnect you from the SHSU wireless network.

