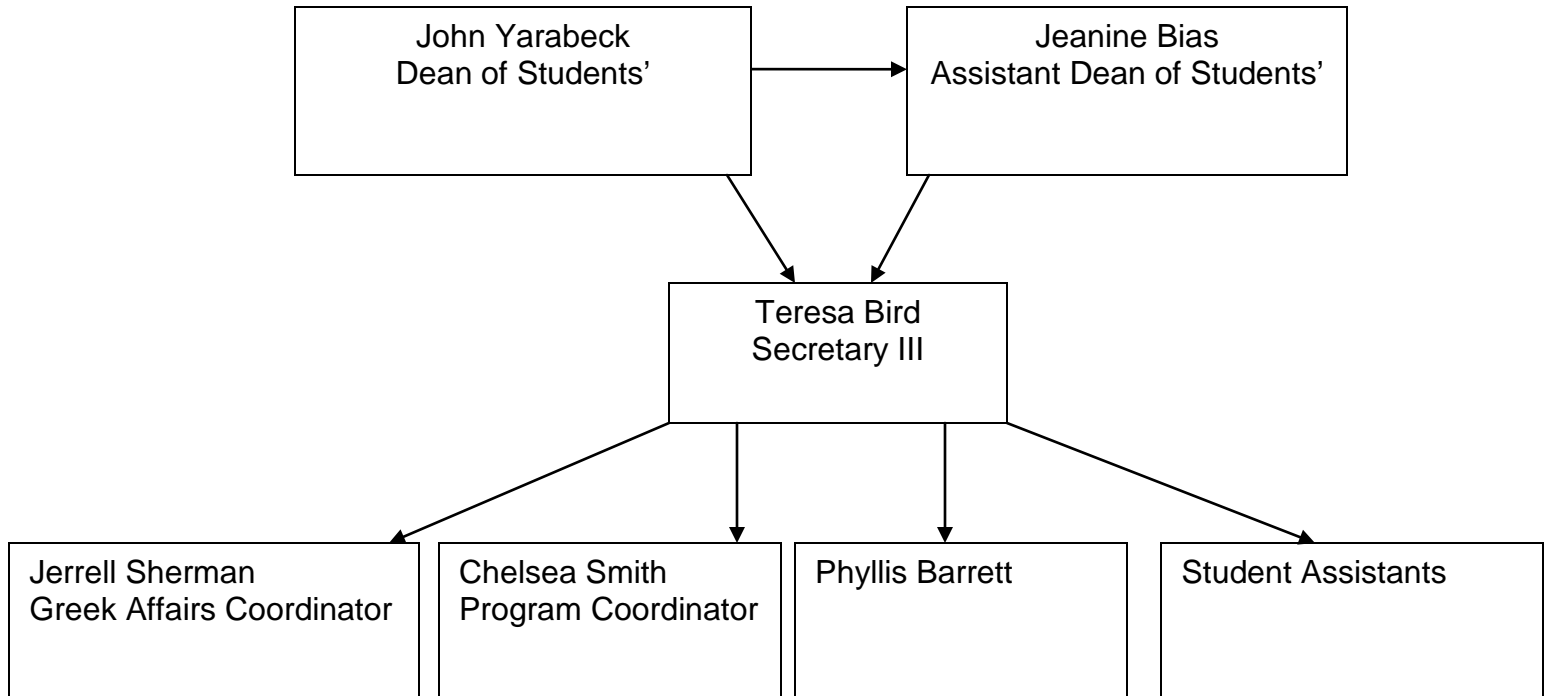


**Dean of Students' Office
Emergency Response Plan
SHSU**

1) Emergency Call Tree



- 2) In the event sheltering off campus is needed, staff members will be housed at Dean John Yarabeck's personal place of residence.
- 3) In the event of a hurricane or other natural disasters that requires students to be housed on campus Dean John Yarabeck may set up temporary shelter in his office in order to more effectively address his on call responsibilities.
- 4) A fire extinguisher is located in the main hallway of the office area across from room 215 D. A first aid kit is located in the second drawer in our break room next to the sink.