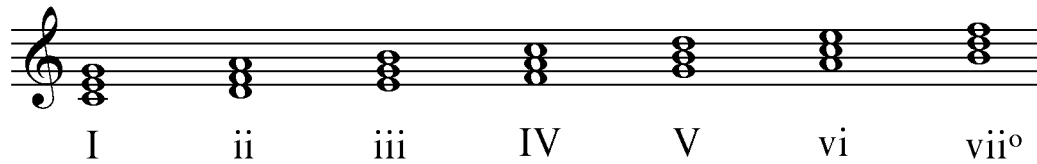


Everything I Know About Music Theory, I Learned from C Major Triads Handout

Once you have learned the qualities of the triads that are built on each scale degree of the major scale, you can use this information to help you quickly identify the quality of any given triad.



Category 1

Triads built on **C, F** and **G** ($C\#, F\#, G\#, C^b, F^b, G^b$) are **major** if all of the notes in the chord have the same accidental.



Category 2

Triads built on **D, E** and **A** ($D\#, E\#, A\#, D^b, E^b, A^b$) are **minor** if all of the notes in the chord have the same accidental.

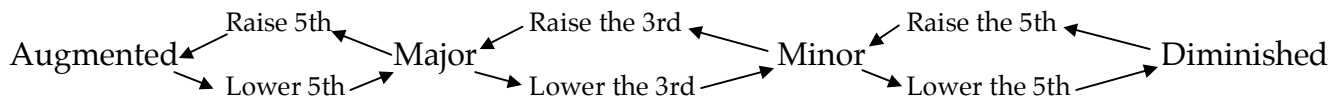


Category 3

Triads built on **B** ($B\#, B^b$) are **diminished** if all of the notes in the chord have the same accidental.



Once you have determined the category, make the appropriate alterations to get the quality that you need.



Examples

D^b diminished: $D^b - F^b - A^b$ (category 2) is minor, so lower the 5th to make $D^b - F^b - A^{bb}$

$F\#$ minor: $F\# - A\# - C\#$ (category 1) is major, so lower the 3rd to make $F\# - A - C\#$

B^b augmented: $B^b - D^b - F^b$ (category 3) is diminished so raise the 3rd, the 5th then the 5th again to make $B^b - D - F\#.P$