



# SHSU KATFACTS

BEST .....  
COLLEGES  
..... FOR THE  
**MONEY**

OVER  
**EIGHTY**  
UNDERGRADUATE  
DEGREES & COUNTING

FACULTY  
--- TO ---  
STUDENT  
RATIO  
**1:25**

MORE THAN  
**230**  
STUDENT  
ORGANIZATIONS

**COMMUNITY ENGAGED**  
UNIVERSITY

The environmental science degree includes coursework from the departments of

- Agricultural Sciences
- Biological Sciences
- Chemistry
- Geography and Geology

Sam Houston State University

College of Science and Engineering Technology  
Box 2209 | Huntsville, TX 77341-2209

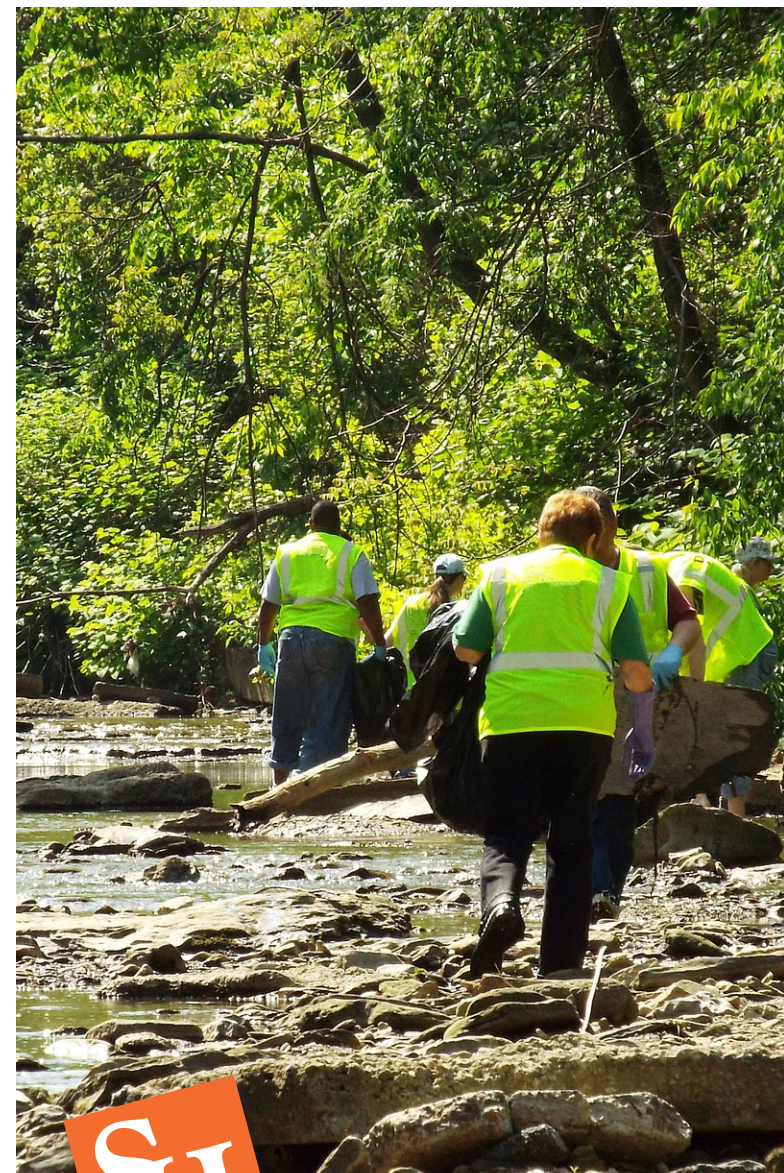
[shsu.edu/see/environment](http://shsu.edu/see/environment)

1-866-BEARKAT



# ENVIRONMENTAL SCIENCE

Bachelor of Science



TM

[shsu.edu/see/environment](http://shsu.edu/see/environment)

**SAM HOUSTON STATE UNIVERSITY**

MEMBER THE TEXAS STATE UNIVERSITY SYSTEM



# ENVIRONMENTAL SCIENCE

[shsu.edu/see/environment](http://shsu.edu/see/environment)

## POSSIBLE CAREERS FOR ENVIRONMENTAL SCIENCE MAJORS

- Environmental Scientist
- Environmental Data Analyst
- Environmental Health and Safety Officer
- Land Reclamation Specialist
- Park Ranger

## A BACHELOR'S DEGREE IN ENVIRONMENTAL SCIENCE

The Bachelor of Science in environmental science is offered in two distinct tracks: pollution abatement and sustainability. The **pollution abatement** track is geared for students interested in the more technical areas of environmental science, such as those pertaining to air and water pollution and waste management. The **sustainability** track allows students to tailor their coursework to their specific career interests through their choice of electives. Both tracks share a common core of courses for a strong foundation in environmental science.

## REQUIREMENTS

Environmental science majors must select one of the two tracks listed above. The degree is interdisciplinary in nature and includes coursework in such areas as energy and the environment, environmental science, soil science, chemistry, ecology, geology, hydrology, soil and water conservation, sustainability, and geospatial technology/GIS.

**Minor:** A minor is not required to complete this program. Students should be aware that a minor will add hours to the length of the degree program.

## SCHOLARSHIPS

Once accepted, students may apply for applicable scholarships by completing the Scholarships4Kats online application. Transfer scholarships are available for students who would like to continue their academic career at Sam Houston.

## HIGHLIGHTS

According to the Bureau of Labor Statistics, the "employment of environmental scientists and specialists is projected to grow 11 percent from 2016 to 2026, faster than average for all occupations."