

SAM HOUSTON STATE UNIVERSITY

# GREEK LIFE



“one community, a world of experiences”

**SHSU GREEK LIFE**

[WWW.SHSU.EDU/GREEKLIFE](http://WWW.SHSU.EDU/GREEKLIFE)

# SHSU GREEK LIFE MISSION, PURPOSE AND GOALS

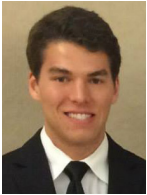


The mission of SHSU’s Greek Life program is to build an extensive Greek community that will assist the university in heightening the collegiate experience through its fraternal commitments to academic achievement, community service, leadership, and the formation of fraternal alliances.

The purpose of SHSU's Greek Life program is to serve as the liaison and as a resource to the collegiate chapters, alumni, parents, international organizations, and Sam Houston State University through providing educational programs, workshops, materials, and direction to members of the Greek community to uphold their fraternal principles.

The goal of SHSU’s Greek Life program is to continually produce a distinguished Greek community that exalts academic excellence, leadership, and service which embodies the core values of Sam Houston State University.

## MEET YOUR PRESIDENT’S!



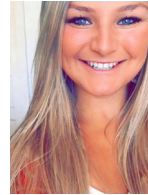
Cole Hollingsworth  
IFC President



Hector Corral  
MGC President



Jalon Berry  
NPHC President



Haley Jozwiak  
PHA President

## TABLE OF CONTENTS

Welcome New Bearkats..... 3  
 Four Pillars of Greek Life..... 4-5  
 Interfraternity Council..... 6-9  
 Multicultural Greek Council..... 10-13  
 National Pan-Hellenic Council..... 14-15  
 Panhellenic Association..... 16-18  
 Hazing Policy..... 19

### TEXAS STATE UNIVERSITY SYSTEM BOARD OF REGENTS

Dr. Robert R. Garza, Chairman.....San Antonio  
 Rossanna Salazar, Vice Chairman.....Austin  
 Charlie Amato.....San Antonio  
 Kevin J. Lilly.....Houston  
 Ron Mitchell.....Horseshoe Bay  
 David Montagne.....Beaumont  
 Vernon Reaser III.....Bellaire  
 William F. Scott.....Nederland  
 Donna N. Williams.....Arlington  
 Anna Sandoval, Student Regent.....Alpine  
 Dr. Brian McCall, Chancellor.....Austin

**WELCOME NEW BEARKATS!** Congratulations on your decision to attend Sam Houston State University! We are very proud of our Greek community and all we have to offer. Our fraternities and sororities provide one of the most comprehensive experiences of university life, focusing on achieving excellence in and out of the classroom. Providing a vibrant and active environment, our organizations strive to live up to their founding principles and ideals, which include scholarship, leadership, community service, fraternal bonds, and rituals.

Going Greek means more than just wearing Greek letters, attending meetings, and going to parties. Being in a fraternity or sorority is about making friendships that will last far beyond your college years while enhancing your personal development by committing to ideals of scholarship, leadership, and service. It is being respected for your individuality while being part of a brotherhood or sisterhood with individuals who share the same goals and values. Your brothers and sisters are there to support you every step of the way, and help as you make the transition to college, one filled with choices, connections, and commitments. Greek Life at SHSU is multi-faceted; there is something in it for everyone:

Fraternity and sorority members hold their commitment to education in high regard by scheduling study nights, providing local and national scholarships, maintaining files of information from classes, pairing you with study buddies, rewarding outstanding academic performance, and providing scholastic assistance when needed.

Philanthropy is another source of pride for all Greeks at SHSU. Each organization supports a national or local philanthropy by hosting large and small scale events as fundraisers or to spread awareness for a particular cause. They also encourage and reward volunteering on campus and in the local community. With 27 Greek organizations on campus, there are plenty of opportunities to donate, volunteer, and have fun for a good cause!

Leadership opportunities will also begin right away. In most chapters, new members are expected to serve on various committees or hold junior offices. New members are encouraged to pay attention during chapter meetings and activities, then decide which area interests them most as there are leadership positions in every chapter for nearly every interest. Remember, by assuming sorority or fraternity membership means you have already been recognized by other students as being a leader on campus.

It is our hope that you take the time to research all that our fraternities and sororities have to offer. With 27 national chapters to choose from, you have a wealth of choices. Remember that this is a lifetime commitment and not just an experience you will have for your undergraduate days here at SHSU. We hope to see you at our events and look forward to seeing you as a member in the immediate future.

**Eat 'Em Up Kats! GO GREEK!**

Fraternally yours,

The SHSU Greek Life Staff  
Lowman Student Center, Suite 215  
Dean of Students Office  
Box 2508  
Huntsville, TX 77341  
936.294.1785 (phone)



# FOUR PILLARS of GREEK LIFE

The four pillars of Greek Life reflect the values members of the SHSU Greek community strive to uphold. Concentrating on these four important areas ensures that Greek members will be versatile individuals ready to successfully handle their world during and beyond their collegiate years.



## I SCHOLARSHIP

Academic excellence is a vital aspect of Greek Life membership at Sam Houston State University. Scholastic standards are important for each individual fraternity or sorority as well as the Greek community as a whole. Programming, incentives, recognition, and ongoing support are provided to help the Greek community pursue academic success. Academic achievement is the reason students are at SHSU; fraternities and sororities are constructed to help their members meet that goal.

## II LEADERSHIP

Developing leaders today for life after college is an essential part of Greek involvement. Greek members participate in a variety of programs that provide leadership advancement. There are many ways to be a leader in SHSU's Greek community, including chapter and/or council officer positions, national or regional leadership conferences, campus-based leadership opportunities, motivational guest speaker workshops, and committee involvement.



## III SERVICE

Service is the backbone of Greek Life involvement at SHSU. It is perhaps the most honorable of the pillars, as members are given opportunities to participate in hands-on volunteer work, as well as engage in philanthropic events to raise money for charitable organizations. These opportunities ensure that Greek members leave a positive lasting impression on their community and build continuous habits of giving back.



“The Measure of a Life is its Service.”  
SAM HOUSTON STATE UNIVERSITY MOTTO

## IV BROTHERHOOD & SISTERHOOD

Joining a fraternity or sorority is about making lifelong relationships that carry-on beyond the boundaries of ordinary friendships. Bonds of brotherhood and sisterhood are created within an organization and provide SHSU Greeks with a home away from home, guidance, career networking, and a sense of community. Greek members enjoy lifelong bonds and connections with friends that can provide support in life's momentous occasions and celebration in life's accomplishments.





## INTERFRATERNITY COUNCIL

The Interfraternity Council (IFC) is the self-governing student organization that provides guidelines and support to its member fraternities. The role of the IFC executive board is to create proper programming and protocol in order to ensure that their purpose as an organization comes to fruition. Each member organization of the IFC focuses on different aspects of fraternity life including, athletics, academics, campus involvement, leadership, and brotherhood. As an organization, they are very structured and have various documents that outline their policies. IFC has their Constitution that outlines the reason behind our existence as an organization and three main documents that are followed by all constitutions: the Judicial Board Bylaws, the Recruitment Policy, and the university's Risk Management Policy.

## CHAPTERS

Alpha Tau Omega (ΑΤΩ)

Delta Tau Delta (ΔΤΔ)

Kappa Alpha (ΚΑ)

Kappa Sigma (ΚΣ)

Phi Delta Theta (ΦΔΘ)

Phi Gamma Delta (ΦΓΔ)

Pi Kappa Alpha (ΠΚΑ)

Sigma Chi (ΣΧ)

Tau Kappa Epsilon (ΤΚΕ)

Theta Chi (ΘΧ)

## HOW TO JOIN

IFC recruitment week occurs 2-4 weeks into the semester. Recruitment is open to any male student attending SHSU that is in good standing with the university. All returning SHSU students as well as transfer students must have a 2.5 or higher cumulative grade point average. There is a \$20 registration fee, but students will be refunded \$5 if they attend all of the week's activities. For information on IFC Recruitment and to register visit: [www.shsu.edu/~org\\_ifc/](http://www.shsu.edu/~org_ifc/)



### Alpha Tau Omega

**Nickname:** ATOs  
**Founded:** September 11, 1865  
at Virginia Military Institute  
**Founded at SHSU:** 1960  
**Colors:** Azure Blue and Old Blue  
**Chapter Website:** www.shsutaus.com  
**National Website:** www.ato.org  
**Philanthropy:** Various



### Delta Tau Delta

**Nickname:** Delts  
**Founded:** 1858 at Bethany College  
**Founded at SHSU:** 1960  
**Colors:** Royal Purple, White, and Gold  
**Chapter Website:** www.shsu.edu/~org\_dtd  
**National Website:** www.delts.org  
**Philanthropy:** Adopt a School



### Kappa Alpha Order

**Nickname:** KA  
**Founded:** December 21, 1865  
**Founded at SHSU:** March 5, 1960  
**Colors:** Old Gold & Crimson  
**Flower:** Crimson Rose and Magnolia Blossom  
**Chapter Website:** www.facebook.com/shsuka  
**National Website:** www.kappaalphaorder.org  
**Philanthropy:** Muscular Dystrophy Association



### Kappa Sigma

**Nickname:** Kappa Sigs  
**Date Founded:** December 10, 1869  
at University of Virginia  
**Founded at SHSU:** March 1, 2008  
**Colors:** Emerald Green, Scarlet Red & White  
**Chapter Website:** www.shsu.edu/~org\_ke  
**National Website:** www.kappasigma.org  
**Philanthropy:** Heroes Fallen





## Phi Delta Theta

**Nickname:** Phi Delts

**Founded:** December 26, 1848  
at Miami (OH) University

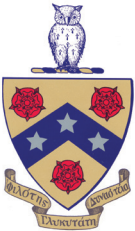
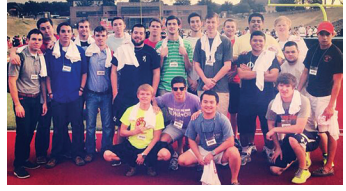
**Founded at SHSU:** January 17, 1992

**Colors:** Azure (Blue) and Argent (White)

**Chapter Website:** [www.shsu.phideltatheta.org](http://www.shsu.phideltatheta.org)

**National Website:** [www.phideltatheta.org](http://www.phideltatheta.org)

**Philanthropy:** ALS- Lou Gehrig Disease



## Phi Gamma Delta

**Nickname:** FIJI or Phi Gam

**Founded:** May 1, 1848

**Founded at SHSU:** March 2013

**Colors:** Royal Purple

**Symbol:** Black diamond with  
a white star in the middle

**Flower:** Purple Clematis

**Chapter Website:** [www.shsufiji.org](http://www.shsufiji.org)

**National Website:** [www.phigam.org](http://www.phigam.org)

**Philanthropy:** American Red Cross



## Pi Kappa Alpha

**Nickname:** Pikes

**Founded:** March 1, 1868 (1868-03-01)  
at University of Virginia

**Founded at SHSU:** 2007

**Colors:** Garnet and Gold

**Chapter Website:** [www.shsupikes.com](http://www.shsupikes.com)

**National Website:** [www.pikes.org](http://www.pikes.org)

**Philanthropy:** Huntsville Fire Department







## Sigma Chi

**Nickname:** Sigs

**Founded:** June 28, 1855 (1855-06-28)

at Miami (OH) University

**Founded at SHSU:** 1961

**Colors:** Blue and Old Gold

**Chapter Website:** [www.samsigs.com](http://www.samsigs.com)

**National Website:** [web.sigmachi.org/wps/portal](http://web.sigmachi.org/wps/portal)

**Philanthropy:** Child Protective Services



## Tau Kappa Epsilon

**Nickname:** Tekes

**Founded:** January 10, 1899

at Illinois Wesleyan University

**Founded at SHSU:** 1987

**Colors:** Cherry Red and Grey

**Chapter Website:** [www.rhorho.org](http://www.rhorho.org)

**National Website:** [www.tke.org](http://www.tke.org)

**Philanthropy:** St. Judes



## Theta Chi

**Nickname:** Theta Chis

**Founded:** April 10, 1856

at Norwich University

**Founded at SHSU:** May 13, 1989

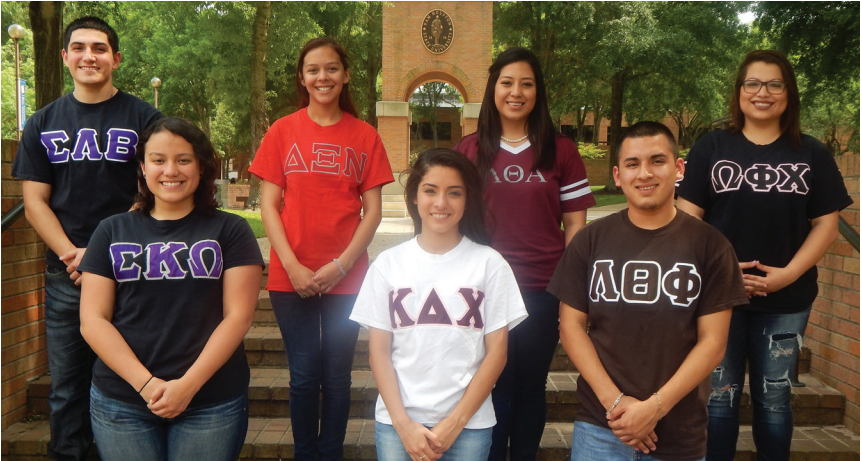
**Colors:** Military Red and White

**Chapter Website:** [thetachishsu.com](http://thetachishsu.com)

**National Website:** [www.thetachi.org](http://www.thetachi.org)

**Philanthropy:** Various





## MULTICULTURAL GREEK COUNCIL

The Multicultural Greek Council serves as a governing body, creates and maintains high standards in the life of culturally-based fraternities and sororities. The Council addresses, manages and creates strategic programming to unify organizations involved in MGC. The Multicultural Greek Council upholds higher education, provides community services, improves leadership, and encourage a positive relationship between MGC members, other Greek Councils, and the university student body and administration, thus improving campus life.

## CHAPTERS

Delta Xi Nu (ΔΞΝ)

Kappa Delta Chi (ΚΔΧ)

Lambda Theta Alpha (ΛΘΑ)

Lambda Theta Phi (ΛΘΦ)

Omega Delta Phi (ΩΔΦ)

Omega Phi Chi (ΩΦΧ)

Sigma Kappa Omega (ΣΚΩ)

Sigma Lambda Beta (ΣΛΒ)

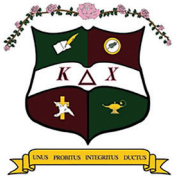
## HOW TO JOIN

These organizations conduct intake at different times throughout the year so it is best to contact them directly for further information about how to join. Students must have a 2.5 cumulative grade point average to join a fraternity or sorority in MGC. Attending their "Greek Showcase" along with the individual chapter's functions is a great way to meet and get to know members of the organizations. For more information visit: [shsumgc.weebly.com](http://shsumgc.weebly.com)



## Delta Xi Nu Multicultural Sorority, Inc.

**Nickname:** Honeys  
**Founded:** October 7, 1997  
**Founded at SHSU:** April 19, 2008  
**Colors:** Red & Silver  
**Flower:** Red Tulip  
**Symbol:** Butterfly  
**Chapter Website:** shsuxihoneys.com  
**National Website:** www.deltaxinu.org  
**Philanthropy:** Violence Against Women



## Kappa Delta Chi Sorority, Inc.

**Nickname:** KDChi  
**Founded:** April 6, 1987  
**Founded at SHSU:** November 15, 1992  
**Colors:** Pink and Maroon  
**Flower:** Pink Rose  
**Mascot:** Penguin  
**Chapter Website:**  
info.theginsystem.com/websites/kdchi\_shsu  
**National Website:** www.kappadeltachi.org  
**Philanthropy:** American Cancer Society



## Lambda Theta Alpha Latin Sorority, Inc.

**Nickname:** Lambda Ladies  
**Founded:** December 1975  
**Founded at SHSU:** June 8, 2003  
**Colors:** Burgundy & Grey  
**Chapter Website:**  
www.wix.com/GammaXi/SHSULambdaLadies  
**National Website:** www.lambdalady.org  
**Philanthropy:** Adopt a Family





## Lambda Theta Phi Latin Fraternity, Inc.

**Nickname:** Lambdas

**Founded:** December 1, 1975

**Founded at SHSU:** March 26, 2014

**Colors:** Brown & White

**Symbol:** Conquistador

**Flower:** White Carnations

**Chapter Website:** [www.facebook.com/temp.temp.756](http://www.facebook.com/temp.temp.756)

**National Website:** [www.lambda1975.org](http://www.lambda1975.org)

**Philanthropy:** American Heart Association



## Omega Delta Phi Fraternity Inc.

**Nickname:** O D Phi

**Founded:** November 25, 1987

**Founded at SHSU:** 2008

**Colors:** Scarlet & Silver

**Flower:** Silver Rose

**Mascot:** Knight

**Chapter Website:**

[www.shsu.edu/~org\\_odp/index.html](http://www.shsu.edu/~org_odp/index.html)

**National Website:** [www.omegadelphi.org](http://www.omegadelphi.org)

**Philanthropy:** CASA-

Court Appointed Special Advocates



## Omega Phi Chi Sorority, Inc. Multicultural

**Nickname:** OPC

**Founded:** November 9, 1988

**Founded at SHSU:** August 24, 2012

**Colors:** Pink and Black

**Symbol:** Black Panther

**Flower:** Lady's Pink Slipper

**National Website:** [www.omegaphichi.org](http://www.omegaphichi.org)

**Philanthropy:** OPC C.A.R.E.S





## Sigma Kappa Omega

**Nickname:** SKO's

**Founded:** November 12, 2001

**Founded at SHSU:** March 31, 2006

**Colors:** Purple & Silver

**Flower:** Purple & Sterling Rose

**Symbol:** Star

**Mascot:** Butterfly

**Chapter Website:** [sigmakappaomegashsu.webs.com](http://sigmakappaomegashsu.webs.com)

**Philanthropy:** American Cancer Society- Relay For Life



## Sigma Lambda Beta International Fraternity, Inc.

**Nickname:** Lambda Betas (Betas)

**Founded:** April 4, 1986

**Founded at SHSU:** February 23, 2002

**Colors:** Purple & White

**Flower:** Red Carnation

**Mascot:** White Stallion Mustang

**Chapter Website:** [www.shsu.edu/~org\\_slb](http://www.shsu.edu/~org_slb)

**National Website:** [www.sigmalambdabeta.com](http://www.sigmalambdabeta.com)

**Philanthropy:** Various





## NATIONAL PAN-HELLENIC COUNCIL

The National Pan-Hellenic Council (NPHC) at the Sam Houston State University is made up of the members of six historically black fraternities and sororities on the campus. NPHC promotes interaction through forums, meetings and other mediums for the exchange of information and engages in cooperative programming and initiatives through various activities and functions. Along with NPHC programming, each individual chapter provides creative, innovative, and educational programs for the campus throughout the year. Chapters also provide social activities and events unique to their organization.

## CHAPTERS

Alpha Phi Alpha (ΑΦΑ)

Delta Sigma Theta (ΔΣΘ)

Phi Beta Sigma (ΦΒΣ)

## HOW TO JOIN

Unlike the other councils, NPHC chapters conduct their membership selection or “membership intake process” independently and at different times. Chapters usually conduct interest meetings that are relatively formal in nature. Prior to membership, students must usually provide transcripts and letters of recommendation. Attending the individual chapter’s functions is a great way to meet and get to know members of the organizations as well as their “Greek Assembly” program which all interested students are required to attend before joining a NPHC organization. For more information visit: [www.shsu.edu/~org\\_nphc](http://www.shsu.edu/~org_nphc)



### Alpha Phi Alpha Fraternity, Inc.

- Nickname:** Alphas
- Founded:** December 4, 1906  
at Cornell University, Ithaca, NY
- Founded at SHSU:**
- Colors:** Black and Old Gold
- Flower:** Yellow Rose
- Symbol:** Great Sphinx of Giza
- Chapter Website:** [www.alphasthetamu.bravehost.com](http://www.alphasthetamu.bravehost.com)
- National Website:** [www.alpha-phi-alpha.com](http://www.alpha-phi-alpha.com)
- Philanthropy:** Go-To-High School, Go-To-College



### Phi Beta Sigma Fraternity, Inc.

- Nickname:** Sigmas
- Founded:** January 9, 1914  
at Howard University, Washington, DC
- Founded at SHSU:** April 15, 1977
- Colors:** Royal Blue & Pure White
- Flower:** White Carnation
- Symbol:** Dove
- Chapter Website:** [www.shsu.edu/~org\\_pbs](http://www.shsu.edu/~org_pbs)
- National Website:** [www.pbs1914.org](http://www.pbs1914.org)
- Philanthropy:** Bigger and Better Business



### Delta Sigma Theta Sorority, Inc.

- Nickname:** Deltas, DST
- Founded:** January 13, 1913  
at Howard University
- Founded at SHSU:** 1973
- Colors:** Crimson & Cream
- Symbol:** Fortitude
- Flower:** African Violet
- National Website:** [www.deltasigmatheta.org](http://www.deltasigmatheta.org)
- Philanthropy:** various





## PANHELLENIC ASSOCIATION

The Panhellenic Association exists to promote the values of and to serve as an advocate for its member groups in collaboration with those members, campuses and communities. Each member group is autonomous as a social, Greek-letter society of college women and alumnae. Each member organization of the Panhellenic Association focuses on different aspects of sorority life including athletics, academics, campus involvement, leadership, and sisterhood. The Panhellenic Association provides a way for member organizations to work together and achieve a greater level of success.

## CHAPTERS

Alpha Chi Omega (ΑΧΩ)

Alpha Delta Pi (ΑΔΠ)

Alpha Omicron Pi (ΑΟΠ)

Sigma Sigma Sigma (ΣΣΣ)

Zeta Tau Alpha (ΖΤΑ)

## HOW TO JOIN

Sorority recruitment is a formal process for prospective sorority members to meet women of the 5 Panhellenic Association chapters at SHSU and for the chapter women to meet the potential new members as well as learn what it means to be a member of the Panhellenic Association and SHSU Greek community. This is the time to learn about the principles, standards, traditions, and programming of each individual sorority. Recruitment is a mutual selection process that takes place over a period of several days. Formal recruitment occurs during each fall. Some chapters may also recruit after the formal recruitment period during a period called Continuous Open Bidding (COB) or informal recruitment (which takes place after formal recruitment or during the spring semester). The process during informal recruitment varies from chapter to chapter. For information on Panhellenic Recruitment and to register visit: [www.shsu.edu/~org\\_npc](http://www.shsu.edu/~org_npc)





## Alpha Chi Omega Women's Fraternity

**Nickname:** Alpha Chi or A-Chi-O  
**Founded:** October 15, 1885  
**Founded at SHSU:** September 26, 1959  
**Colors:** Scarlet Red and Olive Green  
**Flower:** Red Carnation  
**Symbol:** Lyre  
**Chapter Website:** [www.shsuachio.com](http://www.shsuachio.com)  
**National Website:** [www.alphachiomega.org](http://www.alphachiomega.org)  
**Philanthropy:** Domestic Violence Awareness



## Alpha Delta Pi Sorority

**Nickname:** A-D-Pi  
**Founded:** May 15, 1851  
**Founded at SHSU:** April of 1959  
**Colors:** Azure Blue and White  
**Flower:** Single Purple Woodland Violet  
**Mascot:** Lion  
**Symbol:** Black Diamond  
**Chapter Website:** [www.alphadeltapi.org/shsu](http://www.alphadeltapi.org/shsu)  
**National Website:** [www.alphadeltapi.org](http://www.alphadeltapi.org)  
**Philanthropy:** Ronald McDonald House Charities



## Alpha Omicron Pi Sorority

**Nickname:** AOII  
**Founded:** January 2, 1897  
**Founded at SHSU:** November, 2013  
**Colors:** Cardinal Red  
**Symbol:** Panda Bear  
**Flower:** Jacqueminot Red Rose  
**Chapter Website:** [www.aoiishsu.com](http://www.aoiishsu.com)  
**National Website:** [www.alphaomicronpi.org](http://www.alphaomicronpi.org)  
**Philanthropy:** Arthritis Research





## Sigma Sigma Sigma Sorority

**Nickname:** Tri Sigma or Sigma

**Founded:** April 20, 1898

**Founded at SHSU:** 2002

**Colors:** Royal Purple and White

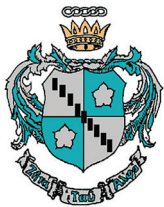
**Symbol:** Sailboat

**Flower:** Purple Violet

**Chapter Website:** [www.shsutrissigma.org](http://www.shsutrissigma.org)

**National Website:** [www.sigmasigmasigma.org](http://www.sigmasigmasigma.org)

**Philanthropy:** Robbie Page Memorial Fund



## Zeta Tau Alpha Women's Fraternity

**Nickname:** Zeta

**Founded:** October 15, 1898

**Founded at SHSU:** May 16, 1959

**Colors:** Turquoise Blue and Steel Grey

**Flower:** White Violet

**Mascot:** Bunny

**Symbol:** Five Point Crown

**Chapter Website:** [www.shsuzetataualpha.com](http://www.shsuzetataualpha.com)

**National Website:** [www.zetataualpha.org](http://www.zetataualpha.org)

**Philanthropy:** Breast Cancer Education and Awareness



**WANT TO REPORT HAZING  
ANONYMOUSLY?  
CALL THE DEAN OF STUDENTS  
HAZING HOTLINE AT  
936-294-1785.**



## HAZING POLICY

Sam Houston State University strongly believes in a brilliant learning environment where all students learn, grow, and develop to their fullest potential in a safe atmosphere. As such, SHSU strongly prohibits any actions, including hazing, that detract from such an environment. Below is SHSU's hazing policy and how you can report hazing anonymously.

No organization may participate in the activity of hazing. Hazing is any activity undertaken by a group or organization or a member of that group or organization in which members or prospective members are subjected to activities that harass, intimidate, physically exhaust, impart pain, cause undue mental fatigue or mental distress, or which cause mutilation or alteration of the body or parts of the body. Such activities include but are not limited to, tests of endurance, submission of members or prospective members to potentially dangerous or hazardous circumstances, activities which have a foreseeable potential for resulting in personal injury, or any activity which by its nature is so profound that it would have a potential to cause severe mental anxiety, mental distress, panic, degradation, or public embarrassment. Registered organizations and groups shall be permitted certain initiation ceremonies and activities, which when examined by the ordinary university student, would seem reasonable under the circumstances and justified in view of the purpose for which they are conducted. It shall not constitute a defense to the charge of hazing that the participants took part voluntarily, that they voluntarily assumed the risks or hardship of the activity, or that no injury in fact was suffered.



# TOP 5 REASONS TO GO GREEK!

1. The SHSU Greek community considers academics a top priority.
2. The SHSU Greek community are leaders on campus.
3. The SHSU Greek community lends a helping hand.
4. The SHSU Greek community is connected to alums.
5. The SHSU Greek community creates lifelong memories.

## FALL 2015 GREEK CALENDAR:

August 23.....	<b>Sneak Peek at Greek</b>
August 25-30.....	<b>PHA Sorority Recruitment</b>
August 31-September 3 .....	<b>S.A.F.E. Week</b>
September 9.....	<b>NPHC Greek Assembly</b>
September 7-12 .....	<b>IFC Fraternity Recruitment</b>
September 17 .....	<b>MGC Showcase</b>