

About the Economic Impact Study

The objective of the Economic Impact Study is to determine Sam Houston State University's local and regional economic impact using rigorous models, methodology and analyses based on full year 2012 expenditures of \$250 million.

The methodology used in the study employs an input-output model, the Impact Analysis and Planning (IMPLAN) model. The IMPLAN database is derived from U.S. national income accounts collected by the U.S. Department of Commerce, the U.S. Bureau of Labor Statistics, and other federal and state government agencies. The data are benchmarked to the Economic Census figures once every five years and then updated annually. The analysis results provide IMPLAN users with a report that demonstrates detail effects of local changes on supporting industries and households including information on job creation, income, production and taxes.

The study was conducted by:

Dr. Edward Blackburne, Chair
Economics & International Business
Sam Houston State University

Dr. William B. Green, Professor
Director, Gibson D. Lewis Center for
Business & Economic Development
Economics & International Business
Sam Houston State University



MEMBER THE TEXAS STATE UNIVERSITY SYSTEM™



SHSU

MAKING AN IMPACT

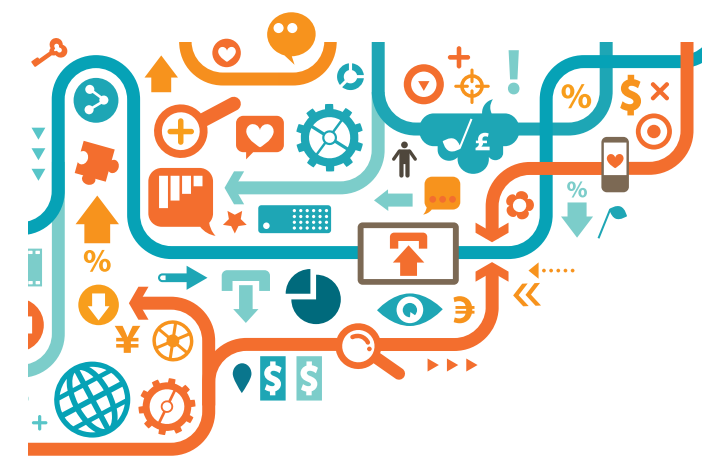
The mission of Sam Houston State University is to provide a high quality education, scholarship and service to students and to regional, state, national, and international constituencies. We continually strive to move our mission forward and our progress can be seen in the accomplishments and recognition achieved at both the university level as well as for our faculty and students. Our growth in graduate education and research merited a reclassification to Doctoral Research and our focus on civic engagement was recognized with a Community Engagement Classification from The Carnegie Foundation for the Advancement of Teaching.

In addition to education and service, the university is a strong economic partner. As one of the largest area employers, Sam Houston State provides jobs that generate a substantial economic impact. Ongoing operations and spending create additional economic value that can be felt across a wide geographic area.

In 2012, the university generated more than 1 in 6 jobs locally and contributed a total local economic impact of \$290 million. At a regional level the effects were far greater, Sam Houston was responsible for an economic impact of \$570 million.

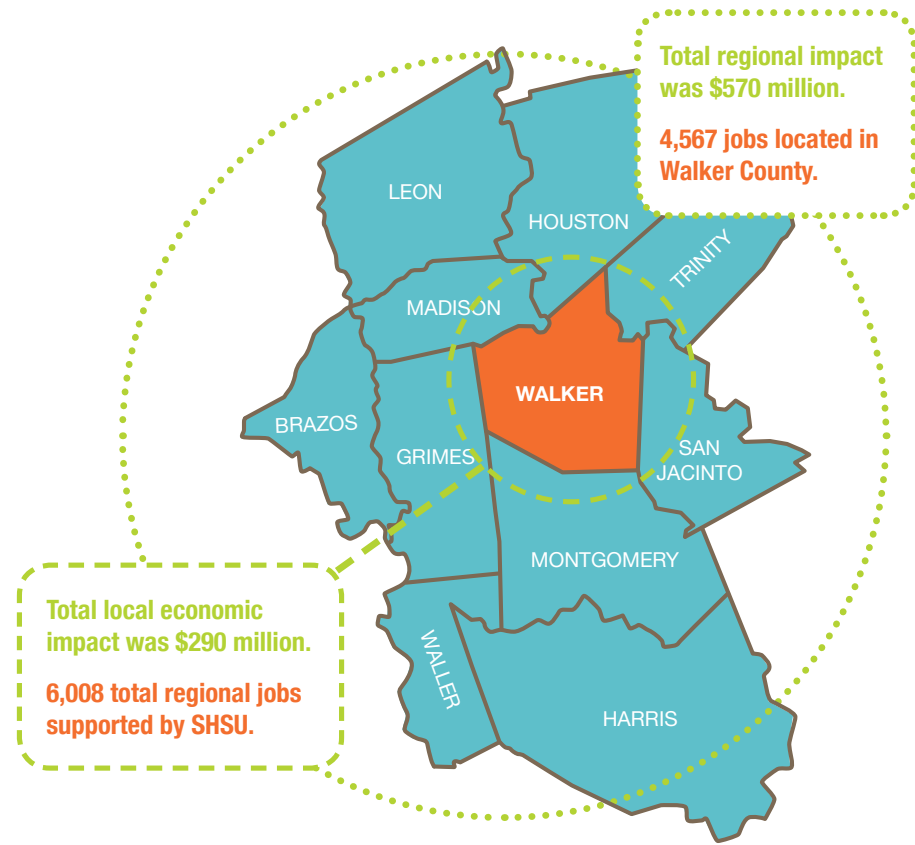
SHSU

MAKING AN IMPACT



CREATING JOBS

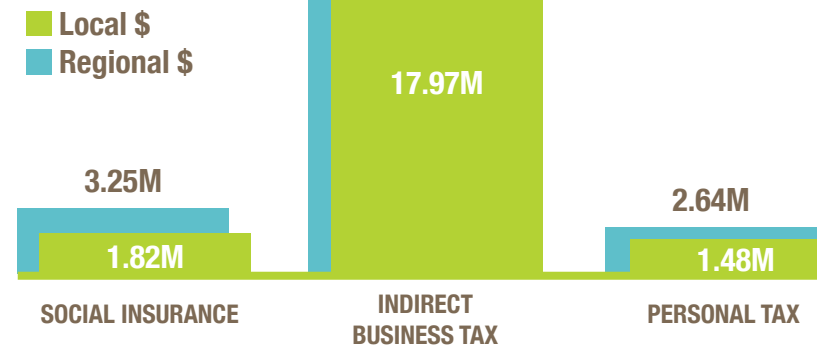
GENERATING TAX REVENUE



More than 1 in 6 jobs in the local economy is attributable to SHSU.

\$32.4 million in total tax revenue attributable to SHSU

Total local impact was \$21.2M



For every \$1 in state funding appropriated to SHSU, \$0.68 in tax revenue is returned to state and local governments.

DIRECT IMPACT

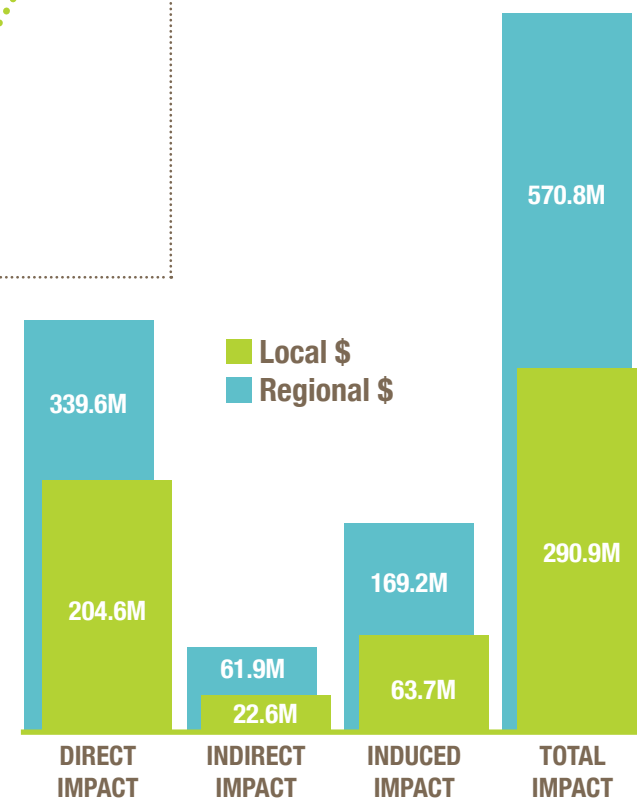
Spending by SHSU, including payroll & auxiliary operations

INDIRECT IMPACT

Purchase of regional goods & services by businesses that supply directly to university

INDUCED IMPACT

Spending by employees, employees of supporting businesses, university students, and visitors



\$1 out of every \$6 generated in Walker County is supported by Sam Houston State University.

	CATEGORIES	JOBS	INCOME	TOTAL IMPACT
LOCAL	Students	1,430	\$30,594,953	\$115,838,821
	Employees	2,438	66,434,442	102,083,457
	Operations	316	11,501,637	36,805,475
	Construction	198	5,486,810	22,795,066
	Visitors	185	3,467,628	13,476,224
	TOTAL	4,567	117,485,470	290,999,043
REGIONAL	Students	2,223	\$76,018,769	\$213,268,827
	Employees	2,687	130,041,133	199,162,992
	Operations	558	37,077,550	88,373,143
	Construction	304	18,877,154	48,231,183
	Visitors	236	7,794,258	21,804,808
	TOTAL	6,008	269,808,864	570,840,953