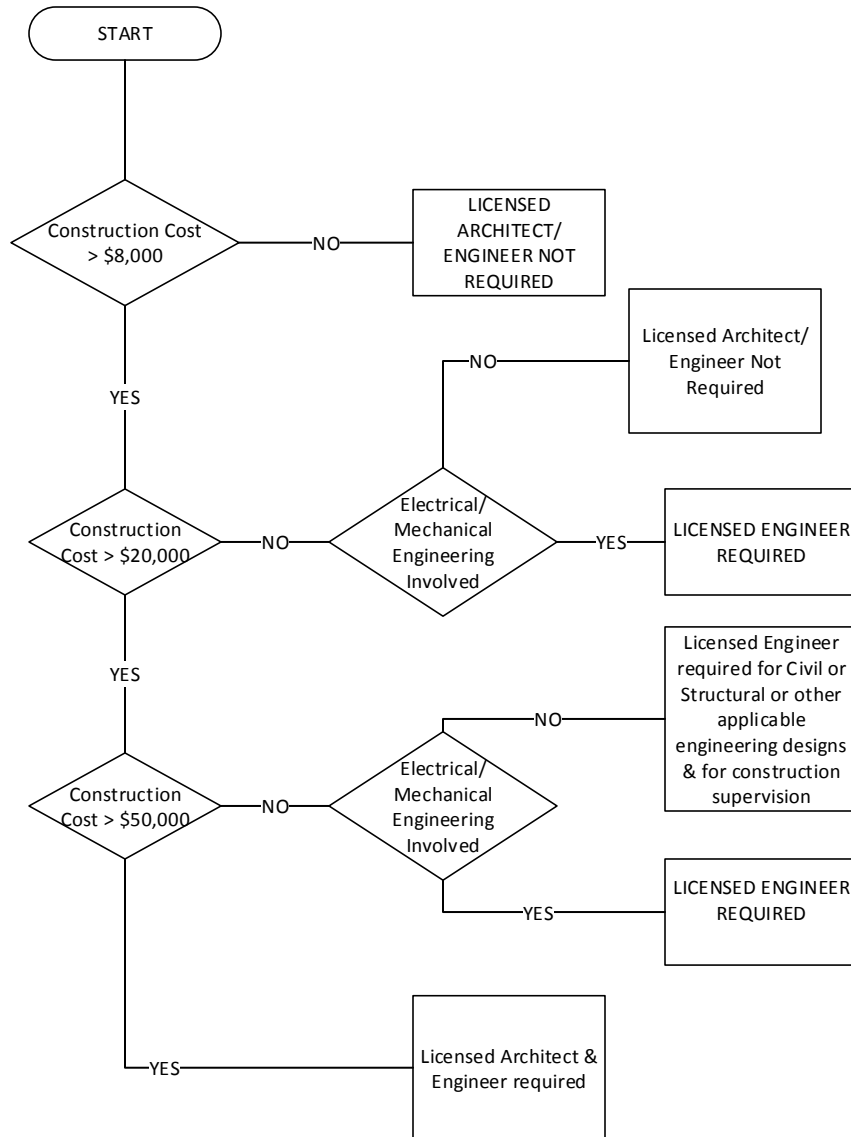


# DO I NEED PROFESSIONAL DESIGN SERVICES From Architect or Engineer?



- All Projects exceeding \$50,000 are required to be registered with TDLR for ADA review
- Licensed Architect/Engineer may be required on a project regardless of Construction Cost under unique circumstances
- Maintenance projects involving “replacement in-kind” are not required to engage Engineer